



SCC1500A-1

Crawler Crane

150 Tons Lifting Capacity

Quality Changes the World



Max. lifting moment: $140 \times 6 = 840 \text{t} \cdot \text{m}$
Max. boom length: 76m
Max. fixed jib combination: 64m+31m

The parameters and diagrams in the brochure is only for reference, which is subject to further update in real machine.

■ www.sany.com.cn

Version: V1.0



Crawler Crane Series
SCC1500A-1

P03

Main
Characteristics

- Product Specification
- Safety Device

P09

Technical
Parameters

- Major Performance & Specifications
- Outline Dimension
- Transport Dimension
- Transport Plan

P18

Cofigurations

- H Configuration
- FJ Configuration



SCC1500A-1
SANY CRAWLER CRANE
150 TONS LIFTING CAPACITY

QUALITY CHANGES THE WORLD

Main Characteristics

- Page 04 Product Specification
- Page 07 Safety Device



Product Specification



Engine

- Model: DCEC (Cummins China) QSL8.9-C325 Diesel engine;
- Type: 4-stroke, water-cooled, vertical in-line 6 cylinders, direct injection, turbo-charger, intercooler, complied with European Off-way Tier III Emission Standard and Chinese Off-way Tier III Emission Standard;
- Displacement: 8.9L;
- Rated power: 242kW/2100rpm;
- Operation power: 234kW/1800rpm;
- Max. Torque: 1385N·m/1500rpm;
- Starter: 24V-6.0kW;
- Radiator: fin type aluminum plate core;
- Air cleaner: Dry type system with main filter element, safety element and resistance indicator;
- Throttle: Grip type hand throttle, electrically-controlled;
- Fuel filter: Replaceable paper element;
- Batteries: Two 12V×180Ah capacity batteries, connected in series;
- Fuel tank capacity: 400L.

Electrical Control System

- Self-developed SYIC-II integrated control system is adopted with higher integration, precise operation and reliable quality;
- Control system consists of power system, engine system, main control system, LMI system, auxiliary system and safety monitoring system. CAN BUS is used for data communication between controller, monitor and the engine;
- Monitor: the working parameters and status are shown on the monitor, such as the engine speed, fuel volume, engine oil pressure, servo pressure, wind speed, engine working hours, lifting conditions and boom angle.

Hydraulic System

- Main pumps: open variable displacement piston pumps of large displacement are adopted to provide oil supply for main actuators of main machine;
- Gear pump: dual gear pump for swing, radiator and control circuit;
- Control: main pump adopts electrically-controlled positive flow control; winch motor adopts limitless adjustable piston motor of variable displacement. The operating components are two cross hydraulic handle, one dual travel pedal control valve to control various actuators proportionally;
- Way of cooling: heat exchanger, fan core and multi-stage cooling;
- Filter: large flow, high precision filter, with bypass valve and transmitter, which can remind the user to replace the filter element in time;
- Max. pressure of system: 32 Mpa;
- Main/aux. load hoist and travel system: 32Mpa;
- Swing system: 20 MPa;
- Control system: 5 MPa;
- Hydraulic Tank Capacity:460L.

Main and Auxiliary Load Hoist Mechanism

- Main and aux. hoist winches are driven separately by motor via gearbox. Operating winch handle can control the winch to rotate to two directions, which are lifting and lowering of hook. Excellent inching function is equipped on the machine;
- Drums with fold-line grooves can ensure the wire rope reeved in order in multilayers;
- Free fall for main/aux. load hoist is offered as optional.

Main Hoisting Mechanism	Drum diameter	630mm
	Rope speed (5th layer)	0-156m/min
	Diameter of wire rope	26mm
	Main load hoist wire rope length	330m
	Rated single line pull	13.5t
Auxiliary Hoisting Mechanism	Drum diameter	630mm
	Rope speed (5th layer)	0-156m/min
	Diameter of wire rope	26mm
	Auxiliary load hoist wire rope length	260m
	Rated single line pull	13.5t



Product Specification

Boom Hoist Mechanism

- Boom hoist winch is driven directly by motor via gearbox. Operating winch handle can control the winch to rotate to two directions, which are lifting and lowering of boom;
- Drums with fold-line grooves can ensure the wire rope reeved in order in multilayers.

Boom hoist mechanism	Drum diameter	420mm
	Rope speed (5th layer)	0~78m/min
	Diameter of wire rope	20mm
	Boom hoist wire rope length	215m

Swing Mechanism

- Swing brake adopts wet, spring loaded, normally-closed brake, and braking through spring force;
- Swing system, equipped with integrated swing buffer valve, has free slipping function. It is featured in steady starting and control, and excellent inching function. Unique swing buffer design and steadier brake;
- Swing drive: internal engaged swing drive with 360° swing range, and the max. swing speed is 1.2r/min. The max. drive pressure can reach 20MPa;
- Swing ring: three-row roller bearing.

Cab and Control

- Novel operator's cab with fashionable profile, nice interior and large window glass, which can tilt up by 20° to provide panorama view. There are low and high-beam lights, back-view mirror, heater and A/C, radio and other functions. The layout of seat, handles, control buttons are designed with ergonomic principles to make operation more comfortable;
- Cab layout: Integrated 10.4-inch touch screen, programmable smart switches, and man-machine interaction interface are more perfect;
- Armrest box: on the left and right armrest box are control handles, electrical switches, emergent stop and ignition switch. The armrest box can be adjusted along with the seat;
- Seat: multi-way and multi-level floating adjustable seat with unload switch;
- A/C: cool and heat air; optimized air channels and vents;
- Multiple cameras can present on the monitor at the same time to realize backing video, real-time monitoring of wire rope on each winch, conditions behind the counterweight and surrounding the machine.

Counterweight

- The stacking mode of counterweight tray and blocks is used for easy assembly, disassembly and transportation;
- Rear counterweight: total weight 61.3t. There are two types, the standard offering is regular counterweight, and the optional offering is self-assembled counterweight;
- The standard counterweight: tray 12.7t × 1, counterweight blocks 7.1 × 6, counterweight blocks 3t × 2;
- The optional counterweight: tray 12t × 1, counterweight blocks 5.25t × 8, counterweight blocks 3t × 2, self-assembly cylinder bracket 1.3t × 1;
- Carbody counterweight: A total of 2, total weight of 20t (10t × 2); Rear counterweight self-assembly device is offered as optional.

Upperworks

- High-strength steel weld framework, with no torsion or deformation. The parts are laid out in the way that is easier for maintenance and service.

Product Specification



Lowerworks

- Independent travel driving units are adopted for each side of the crawler, to realize straight walking and turning driven by travel motor through gearbox and drive wheel.

Crawler Tightening

- The jack is used to push the guide wheel and insert the shim to adjust crawler tension.

Track Pad

- High strength alloy cast steel track pad ensure long service life;
- They are 950mm wide with a quantity of 64 pads x 2.

Operating Equipment

- All chords are high-strength steel tubes, and the boom/jib top sheaves are made of high-strength anti-wearing Nylon material protecting wire rope. The hooks are installed with milled welded steel sheave.

Boom

- Lattice structure. The chord adopts high-strength structural tube and each section is connected through pins;
- Basic boom: 8m boom base + 8m boom top;
- Boom insert: 3m×1, 6m×2, 9m×5;
- Boom length: 16m~76m.

Fixed Jib

- Lattice structure. The chord adopts high-strength structural tube and each section is connected through pins;
- Basic jib: 5m jib base +3m insert +5m jib top;
- Jib insert: 6m×3;
- Fixed jib: 13m~31m;
- Longest boom + jib: 64m +31m.

Extension Jib

- The welding structure is connected with main boom through hinge pin, and used for aux. hook operation;
- Length of extension boom: 2.7m.

Hook Block

- 150t hook, 7 pulleys;
- 80t hook, 3 pulleys;
- 35t hook, 1 pulley;
- 13.5t ball hook.



Safety Device

Assembly/Work Mode Control Switch

- Under the assembly mode, over-hoist limit switch, crane boom limit device and load moment limiter do not work, so as to facilitate the installation of crane;
- All safety limit devices work in the work mode.

Emergency Stop

- In emergent situation, this button is pressed down to cut off the power supply of whole machine and all actions stop.

Load Moment Limiter (LMI)

- It is an independent computerized safety control system. LMI can automatically detect the load weight, work radius and boom angle, and present on the display the rated load, actual load, work radius and boom angle. In normal operation, the LMI can make a judgment and cut off automatically if the crane moves towards dangerous direction. It can also perform as a black box to record the lifting information;
- It is composed of monitor, angle sensor and force sensor and other parts.

Over-hoist Limit Switch of Main/Auxiliary Hooks

- Over-hoist protection device comprises of limit switch and weight on boom top, which prevents the hook lifting up too much;
- When the hook lifts up to the limit height, the limit switch activates, buzzer on the left control panel sends alarm, failure indicator light starts to flash, and the hook hoisting action is cut off automatically, cut off automatically.

Over-release Limit Switch of Main/Auxiliary Hooks

- It is comprised of activator in the drum and proximity switch to prevent over release of wire rope. When the rope is paid out close to the last three wraps, the limit switch acts, and the system sends alarm through buzzer and show the alarm on the instrument panel, automatically cutting off the winch action.

Function Lock Lever

- If the function lock level is not in work position, all the other handles won't work, which prevents any mis-operation caused by accidental collision.

Boom Hoist Drum Lock

- Pawl lock is used on boom hoist winch, which needs to unlock by switch before operation, in order to prevent mis-operation of handles and ensure safety during nonwork time.

Swing Lock Device

- Swing Lock can lock the machine at four positions, front and back, left and right.

Boom Limit Device

- When the boom elevation angle reaches the max. set limit, the buzzer sounds and boom action cut off. This protection is two-stage control ensured by both LMI system and travel switch;
- Back-stop Device;
- Its major components are nesting tubes and spring, in order to buffer the boom backlash and prevent further tipping back;
- Boom Angle Indicator;
- Pendulum angle indicator is fixed on the side of boom base close to the cab, so as to provide convenience to the operator.

Hook Latch

- The hook is provided with a baffle to prevent wire rope from falling off.

Safety Device



Lightning Protection Device

- It is offered as an optional feature, which includes the grounding device that can effectively protect the electric system elements and workers from lightning.

Tri-color Load Indicator

- The load indication light has three colors, green, yellow and red, and the real time load status is presented on the display. When the actual load is smaller than 90% of rated load, the green light is on;
- When the actual load is larger than 90% and smaller than 100%, the yellow light is on, the alarm light flashes and sends out intermittent sirens;
- When the actual load reaches 100% of rated load, the red light is on, the alarm light flashes and sends out continuous sirens;
- When the actual load reaches 102% of rated load, the system will automatically cut off the crane operation in dangerous trend.

Audio-visual Alarm

- When the engine is working, the light flashes; when the machine is traveling or swinging, it sends out sirens.

Swing Indicator Light

- The swing indicator light flashes during traveling or swing.

Illuminating Light

- The machine is equipped with the low beam light and high beam light at the front of the cab, illumination light at cab, and other night lights, boom lights to improve the visibility during construction.

Rearview Mirror

- Separately set on the left front of the cab and on the handrail at the front of right sheet metal, so as to monitor the rear part of machine.

Pharos

- Pharos is mounted on the top of boom/jib to indicate the height.

Anemometer

- It is mounted on the top of boom/jib, and displayed on the monitor in the cab.

Electronic Level Indicator

- It displays the tipping angle of crane on the monitor in real time, protecting the machine from dangerous situation;
- Put down the function lock lever on the left side of cab seat or if the operator leaves the seat, all control levers will be deactivated to prevent any mis-operation due to accidental collision.

Engine Power Limit Load Adjustment and Stalling Protection

- The controller monitors the engine power to prevent engine getting stuck and stalling.

Engine Status Monitoring

- The engine status will be presented, such as engine coolant temperature, fuel volume, total work hours, engine oil pressure, engine speed, battery charging, voltage.

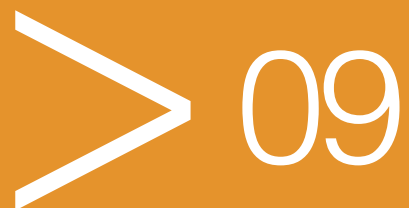


SCC1500A-1
SANY CRAWLER CRANE
150 TONS LIFTING CAPACITY

QUALITY CHANGES THE WORLD

Technical Parameters

- Page 10 Major Performance Specifications
- Page 11 Outline Dimension
- Page 12 Transport Dimension
- Page 16 Transportation Plan

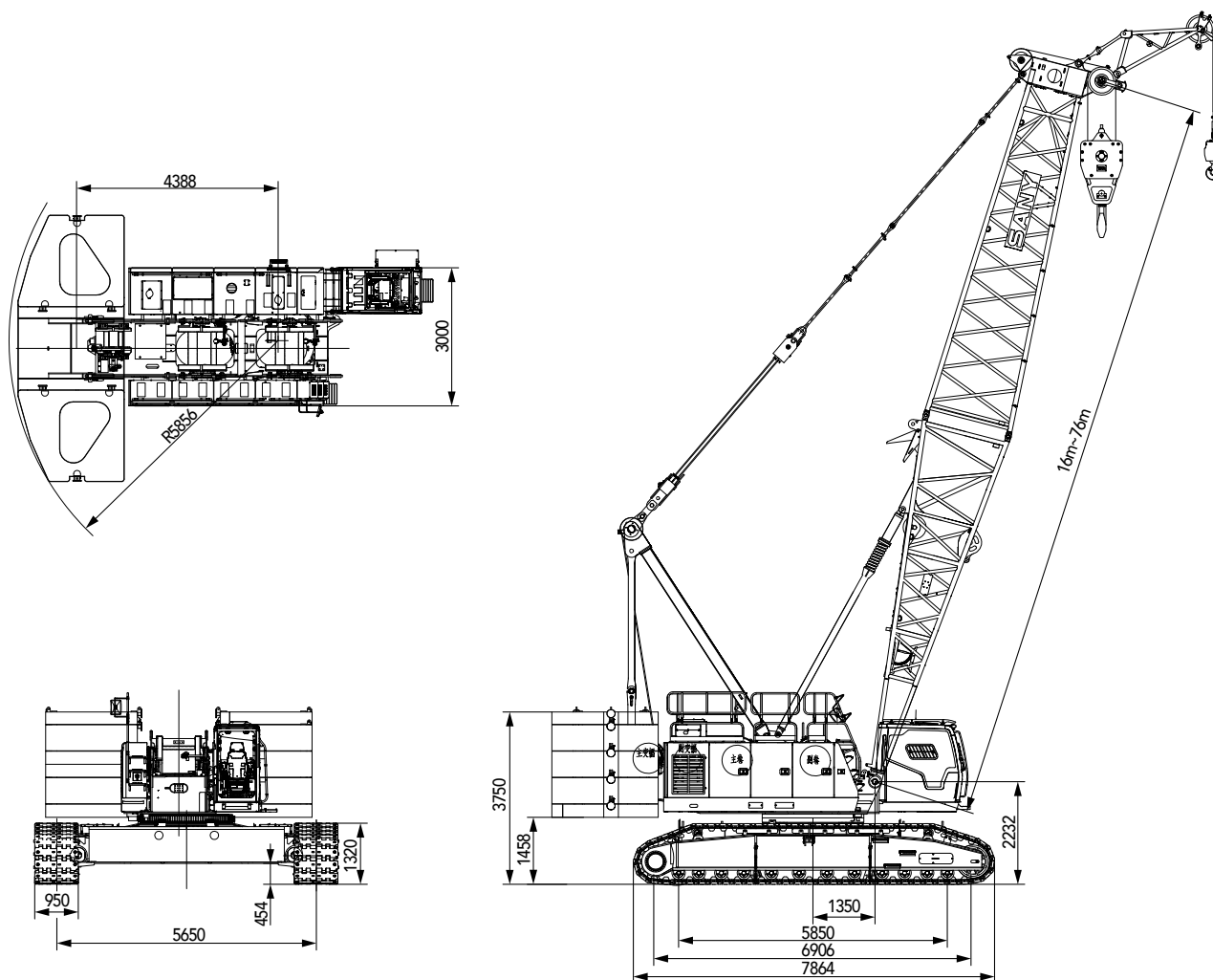


Major Performance Specifications

Major Performance & Specifications of SCC1500A-1			
Performance Indicators		Unit	Parameter
Boom configuration	Maximum rated lifting capacity	t	150
	Maximum rated lifting moment	t·m	840(=140x6)
	Boom length	m	16~76
Fixed jib configuration	Maximum rated lifting capacity	t	30
	Jib length	m	13~31
	Longest main boom + jib	m	64+31
Operation speed	Rope speed of main/aux. load hoist (5th layer)	m/min	0~156
	Boom hoist winch rope speed (5th layer)	m/min	0~78
	Slewing speed	rpm	0~1.2
	Travelling speed	km/h	0~1.3
Engine	Output power	kW	242
	Rated speed	rpm	2100
Transport parameter	Max. transport weight of basic machine (with standard regular counterweight and boom base)	t	36.7
	Maximum transport dimension of basic machine (L x W x H, mm)	mm	16110x3000x3250
Other parameters	Average ground bearing pressure	MPa	0.118
	Grade ability	%	30

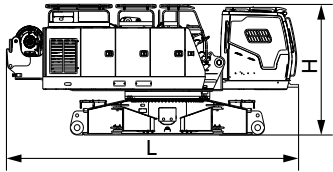
Unit: mm

Outline Dimension



Note: this is standard offering without self-assembly counterweight

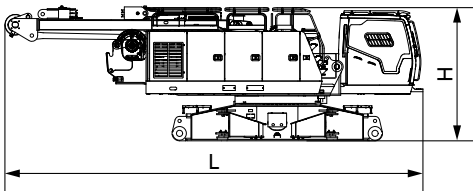
Transportation Dimensions



Basic Machine (1)

×1

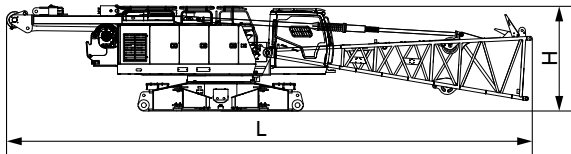
Length(L)	7.62m
Width(W)	3.00m
Height(H)	3.15m
Weight	29.9t



Basic Machine (2)

×1

Length(L)	10.70m
Width(W)	3.00m
Height(H)	3.25m
Weight	32.9t

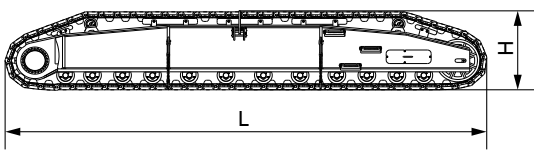


Basic Machine (3)

×1

Length(L)	16.11m
Width(W)	3.00m
Height(H)	3.25m
Weight	36.7t

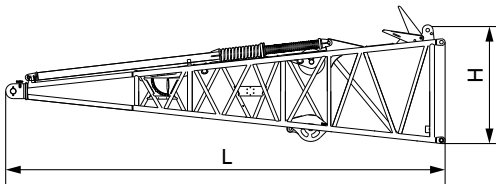
Note: the above three modes are all with regular counterweight for standard offering.



Crawler Assembly

×2

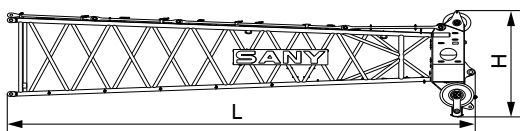
Length(L)	7.86m
Width(W)	1.32m
Height(H)	1.32m
Weight	14.4t



Boom Base

×1

Length(L)	8.21m
Width(W)	2.23m
Height(H)	2.24m
Weight	3.81t

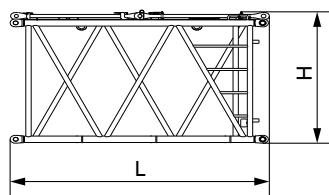


Boom Top

×1

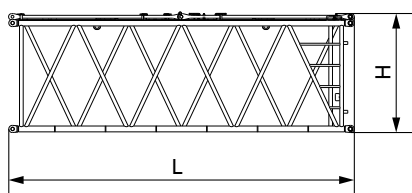
Length(L)	8.51m
Width(W)	2.11m
Height(H)	2.33m
Weight	2.58t

Transportation Dimensions



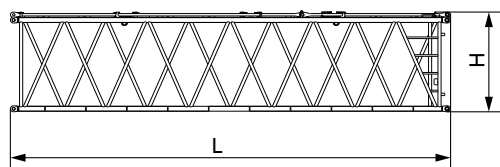
3m Boom insert × 1

Length(L)	3.14m
Width(W)	2.21m
Height(H)	2.08m
Weight	0.63t



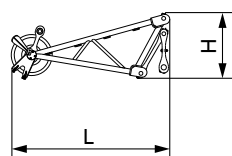
6m Boom insert × 2

Length(L)	6.14m
Width(W)	2.21m
Height(H)	2.08m
Weight	1.06t



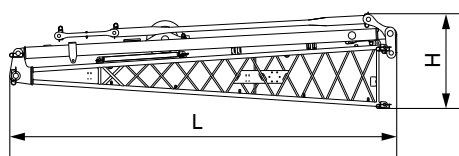
9m Boom insert × 5

Length(L)	9.14m
Width(W)	2.21m
Height(H)	2.08m
Weight	1.74t



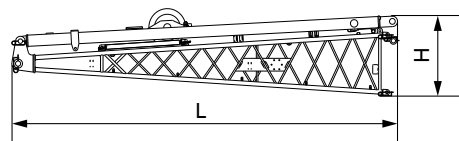
Extension jib × 1

Length(L)	2.36m
Width(W)	1.04m
Height(H)	0.98m
Weight	0.3t



Fixed jib base (with strut and tapered pendant strap) × 1

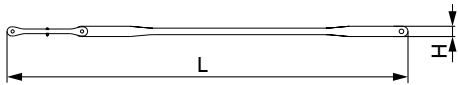
Length(L)	5.25m
Width(W)	2.06m
Height(H)	1.45m
Weight	0.87t



Fixed jib base (with strut but no tapered pendant strap) × 1

Length(L)	5.25m
Width(W)	1.19m
Height(H)	1.30m
Weight	0.71t

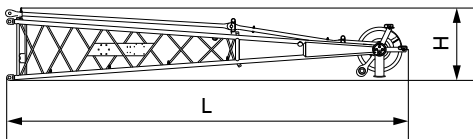
Transport Dimensions



Tapered Pendant Strap

×1

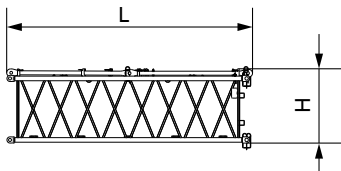
Length(L)	4.33m
Width(W)	2.06m
Height(H)	0.11m
Weight	0.16t



Fixed jib top

×1

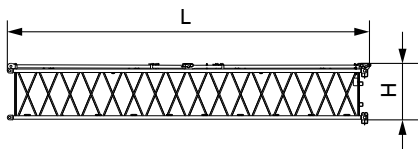
Length(L)	5.43m
Width(W)	1.01m
Height(H)	0.99m
Weight	0.53t



3m fixed jib insert

×1

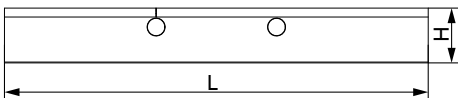
Length(L)	3.12m
Width(W)	1.02m
Height(H)	0.92m
Weight	0.19t



6m fixed jib insert

×3

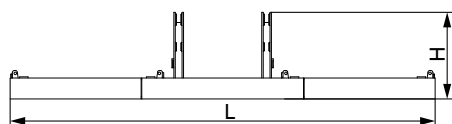
Length(L)	6.12m
Width(W)	1.02m
Height(H)	0.92m
Weight	0.34t



Carbody Counterweight

×2

Length(L)	4.25m
Width(W)	1.5m
Height(H)	0.55m
Weight	10t

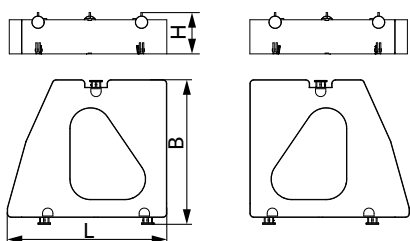


Counterweight tray (regular counterweight for standard offering)

×1

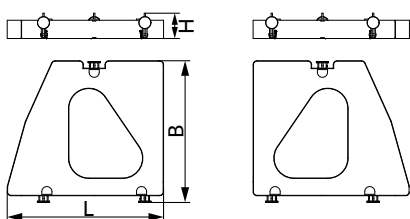
Length(L)	5.8m
Width(W)	2.31m
Height(H)	1.18m
Weight	12.7t

Transportation Dimensions



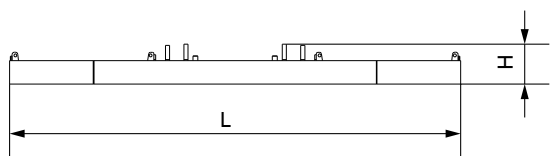
Counterweight block 1 (regular counterweight for standard offering) (1+1) × 3

Length(L)	2.31m
Width(W)	2.09m
Height(H)	0.59m
Weight	7.1t



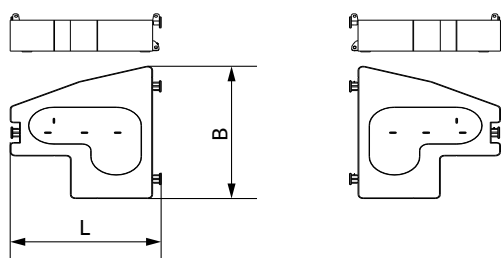
Counterweight block 2 (regular counterweight for standard offering) 1+1

Length(L)	2.31m
Width(W)	2.09m
Height(H)	0.37m
Weight	3t



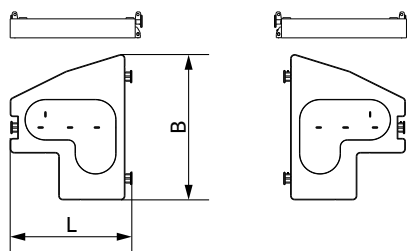
Counterweight tray (self-assembly for optional offering) × 1

Length(L)	5.8m
Width(W)	2.31m
Height(H)	0.5m
Weight	12t



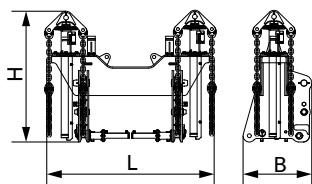
Counterweight block 1 (self-assembly for optional offering) (1+1) × 4

Length(L)	1.93m
Width(W)	2.28m
Height(H)	0.60m
Weight	5.25t



Counterweight block 2 (self-assembly for optional offering) 1+1

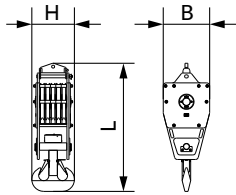
Length(L)	1.93m
Width(W)	2.28m
Height(H)	0.38m
Weight	3t



Counterweight Cylinder, Bracket, Chain (self-assembly for optional offering) 1

Length(L)	2.15m
Width(W)	0.88m
Height(H)	1.68m
Weight	2.1t

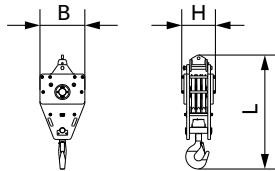
Transport Dimensions



150t Hook

×1

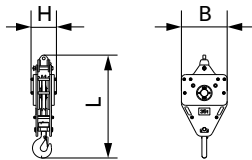
Length(L)	2.45m
Width(W)	0.91m
Height(H)	0.95m
Weight	2.91t



80t Hook

×1

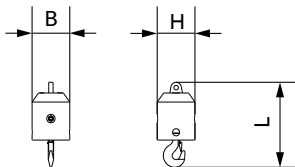
Length(L)	2.13m
Width(W)	0.82m
Height(H)	0.62m
Weight	1.64t



35t Hook

×1

Length(L)	1.88m
Width(W)	0.82m
Height(H)	0.46m
Weight	1.11t



13.5t Ball hook

×1

Length(L)	0.95m
Width(W)	0.43m
Height(H)	0.43m
Weight	0.45t

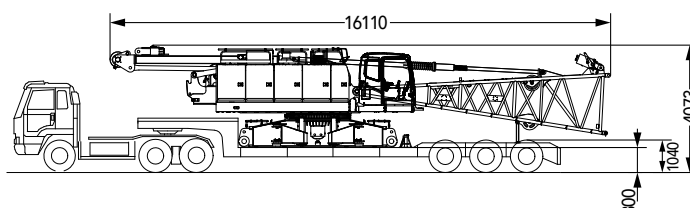
Remarks:

- 1.The transport dimensions for the parts are for reference that do not draw to the scale. The dimensions listed above are design values excluding packing.
- 2.Weight is design values. It maybe different due to manufacturing tolerances.

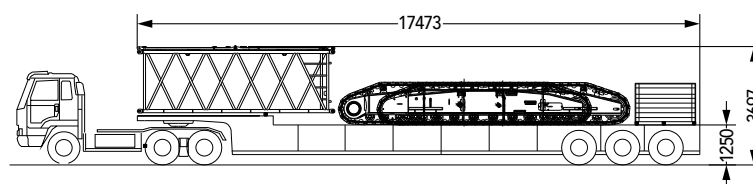
Transport Plan

Transport with crawler frame

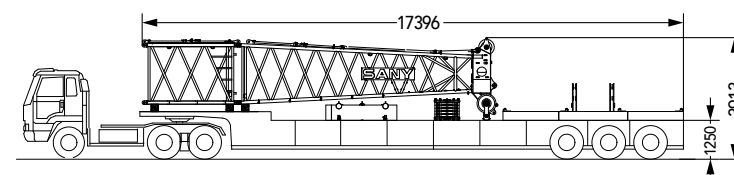
Transport cart 1	
Components included	<ul style="list-style-type: none"> Basic machine (3 winches, carbody, outrigger, A-frame, all wire ropes), boom base
Transport weight	36.7t



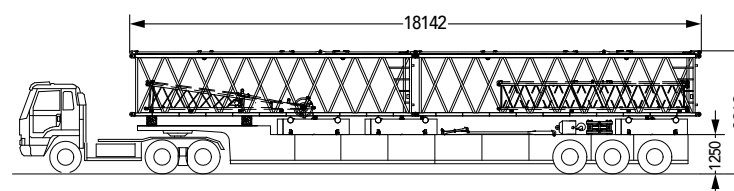
Transport cart 2	
Components included	<ul style="list-style-type: none"> Crawler frame*2: 28.8t 6m boom insert: 1.06t Packing Case: 1t
Transport weight	30.86t



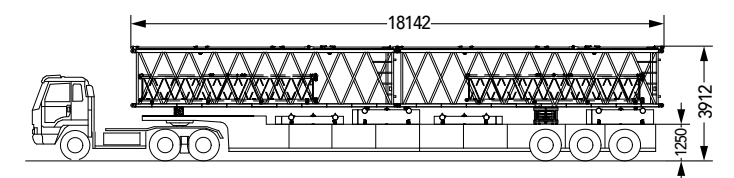
Transport cart 3	
Components included	<ul style="list-style-type: none"> Counterweight tray: 12.7t Rear counterweight block 1x1: 7.1t Boom top: 2.58t 3m boom insert x1 : 0.63t 150t hook: 2.91t
Transport weight	26.08t



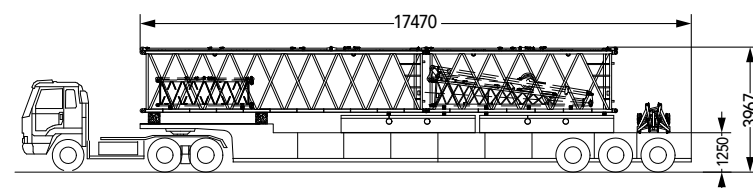
Transport cart 4	
Components included	<ul style="list-style-type: none"> Rear counterweight block 1x3: 21.3t 9m boom insert x 2: 3.48t 6m fixed jib top: 0.34t Fixed jib top: 0.53t Tapered pendant strap: 0.16t 35T hook: 1.11t 13.5T hook: 0.45t
Transport weight	27.37t



Transport cart 5	
Components included	<ul style="list-style-type: none"> Rear counterweight block 1x2: 14.2t Rear counterweight block 2x2: 6t 9m boom insert x 2: 3.48t 6m fixed jib insert x2: 0.68t 80T hook: 1.64t
Transport weight	26t



Transport cart 6	
Components included	<ul style="list-style-type: none"> Carbody counterweight *2: 20t 9 m main boom: 1.74t 6 m main boom: 1.06t Fixed jib base: 0.84t 3 m fixed jib: 0.19t Extension jib: 0.3t
Transport weight	24.13t



Note: this is regular counterweight for standard offering.



SCC1500A-1
SANY CRAWLER CRANE
150 TONS LIFTING CAPACITY

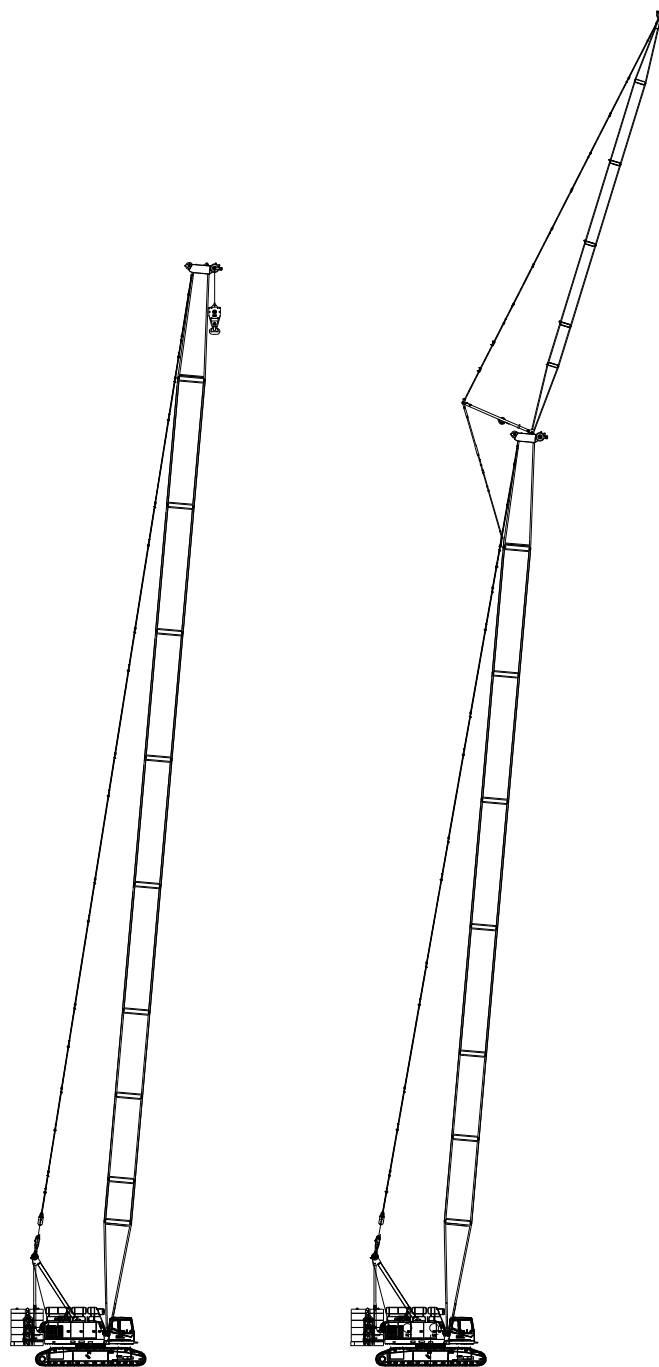
QUALITY CHANGES THE WORLD

Cofigurations

- Page 20 H Configuration
- Page 24 FJ Configuration

> 18

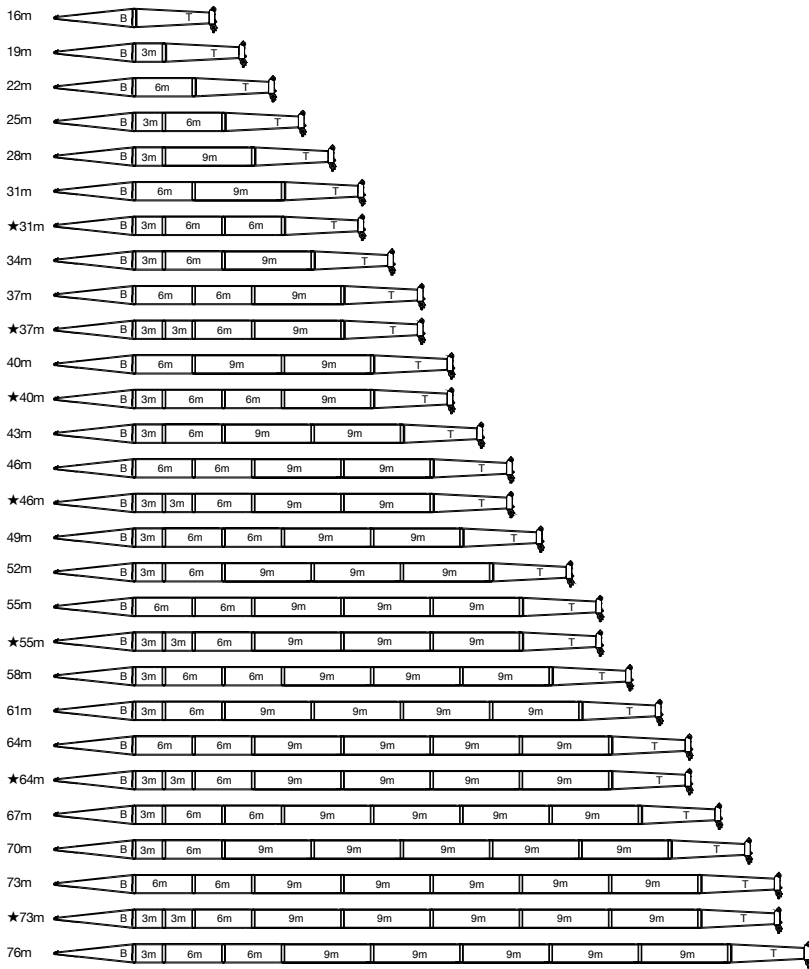
Boom Combination



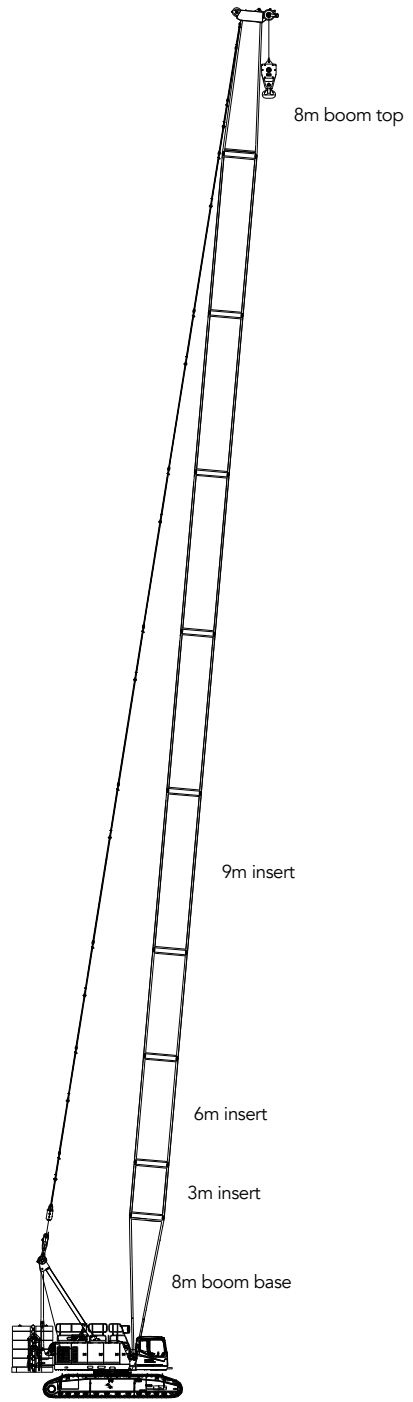
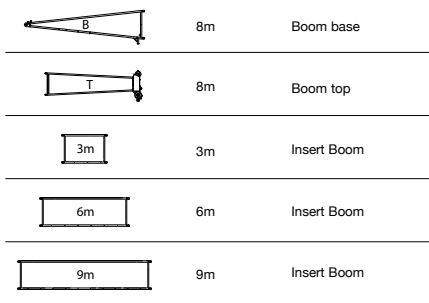
H configuration
(76m)

FJ configuration
(64m+31m)

H Configuration

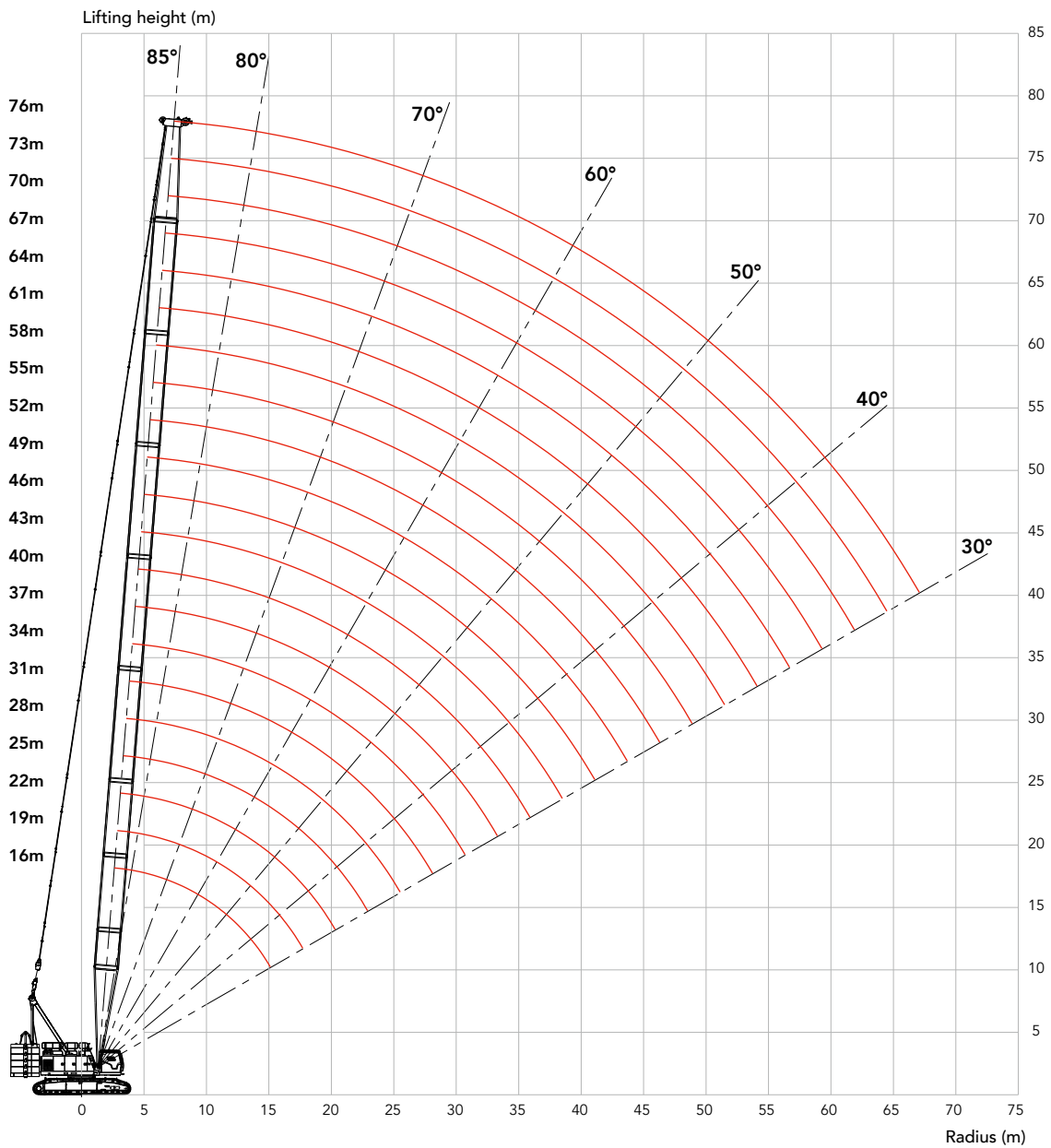


Note: ★ means recommended boom combination.



H Working Condition of main boom: 16m~76m

H Working Radius



H Load Chart

- Note:
- 1.The rated load in the load chart is calculated complying with EN 13000;
 - 2.The working radius is the horizontal distance from the load center to the swing center;
 - 3.The actual lifting capacity must subtract the weight of hooks and other riggings from the rated capacity in the load chart.
 - 4.The load value is calculated when the object is hung freely,without considering the influence of wind on the load, ground conditions and slope, operation speed and the influence of any other negative factors over safe operation. Therefore, the operator bears the responsibility of making a judgement and decreasing the load and lowering speed.
 - 5.All ratings are calculated when the machine is parking on firm and level ground with less than 1% gradient.

SCC1500A-1 crawler crane – H load chart

Main hook, main boom is 16~76m, without extension jib																							
Boom length/ radius (m)	16	19	22	25	28	31	34	37	40	43	46	49	52	55	58	61	64	67	70	73	76	Boom length/ radius (m)	
5	150.0	146.0	141.0																			5	
6	140.0	136.0	133.0	131.0	126.0	115.0																6	
7	118.0	117.0	117.0	116.0	112.0	108.5	103.4	93.7	85.8													7	
8	101.0	100.3	99.7	98.5	95.6	92.8	90.1	87.6	82.6	73.1	69.8	65.2										8	
9	84.5	84.0	83.5	83.0	82.6	81.0	78.9	76.9	74.9	71.3	67.8	63.3	59.9	56.6	52.2							9	
10	72.6	72.1	71.8	71.4	71.0	70.6	70.0	68.3	66.7	65.2	63.7	59.9	56.6	54.3	49.8	48.2	45.1	40.1				10	
12	56.4	56.1	55.8	55.5	55.2	54.9	54.6	54.3	54.0	53.4	52.3	51.2	50.2	49.1	48.1	46.9	43.9	38.9	36.5	34.2	31.3	12	
14	46.0	45.7	45.5	45.2	45.0	44.7	44.5	44.2	44.0	43.7	43.5	43.2	42.4	41.6	40.8	40.0	39.2	36.5	35.1	33.6	30.4	14	
16		38.5	38.3	38.0	37.8	37.6	37.4	37.1	36.9	36.7	36.5	36.2	36.0	35.8	35.2	34.5	33.9	33.2	32.6	31.9	29.3	16	
18		33.1	32.9	32.7	32.5	32.3	32.1	31.9	31.7	31.4	31.2	31.0	30.8	30.6	30.4	30.2	29.6	29.1	28.5	27.9	27.4	18	
20			28.8	28.6	28.4	28.2	28.0	27.8	27.6	27.4	27.2	27.0	26.8	26.6	26.4	26.2	26.0	25.7	25.2	24.7	24.1	20	
22				25.4	25.2	25.0	24.8	24.6	24.4	24.2	24.0	23.8	23.6	23.4	23.2	23.0	22.8	22.6	22.4	22.0	21.5	22	
24					22.5	22.4	22.2	22.0	21.8	21.6	21.4	21.2	21.0	20.8	20.6	20.4	20.2	20.0	19.8	19.6	19.2	24	
26					20.4	20.2	20.0	19.8	19.6	19.4	19.2	19.0	18.8	18.6	18.4	18.3	18.1	17.9	17.7	17.5	17.3	26	
28						18.3	18.1	18.0	17.8	17.6	17.4	17.2	17.0	16.8	16.6	16.4	16.2	16.0	15.9	15.7	15.5	28	
30							16.6	16.4	16.2	16.0	15.8	15.6	15.4	15.3	15.1	14.9	14.7	14.5	14.3	14.1	13.9	30	
32								15.0	14.9	14.6	14.5	14.3	14.1	13.9	13.7	13.5	13.3	13.1	13.0	12.8	12.6	32	
34									13.7	13.5	13.3	13.1	12.9	12.7	12.5	12.3	12.2	12.0	11.8	11.6	11.4	34	
36									12.6	12.4	12.2	12.0	11.9	11.7	11.5	11.3	11.1	10.9	10.7	10.6	10.4	36	
38										11.5	11.3	11.1	10.9	10.8	10.6	10.4	10.2	10.0	9.8	9.6	9.4	38	
40											10.5	10.3	10.1	9.9	9.7	9.6	9.4	9.2	9.0	8.8	8.6	40	
42												9.5	9.4	9.2	9.0	8.8	8.6	8.4	8.3	8.1	7.9	42	
44													8.9	8.7	8.5	8.3	8.1	8.0	7.8	7.6	7.4	44	
46														8.1	7.9	7.7	7.5	7.4	7.1	7.0	6.8	46	
48															7.3	7.1	7.0	6.8	6.6	6.4	6.2	48	
50																6.6	6.5	6.3	6.1	5.9	5.7	50	
52																	6.2	6.0	5.8	5.6	5.4	52	
54																		5.6	5.4	5.2	5.0	4.8	54
56																			5.0	4.8	4.6	4.2	56
58																				4.4	4.2	3.8	58
60																					3.9	3.4	60
62																						3.5	62
64																							64
66																							66
Counter weight(t)	61.3+20																				Counter weight(t)		
Parts of line	13	12	12	11	10	9	8	7	7	6	6	5	5	5	4	4	4	3	3	3	3	Parts of line	

Unit: t

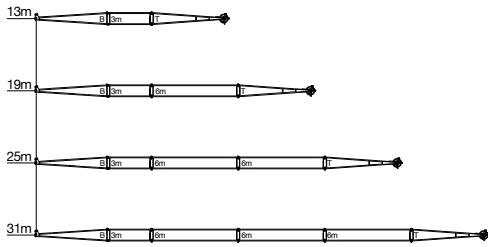
H Load Chart



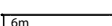

SCC1500A-1 crawler crane – H load chart (Less counterweight)

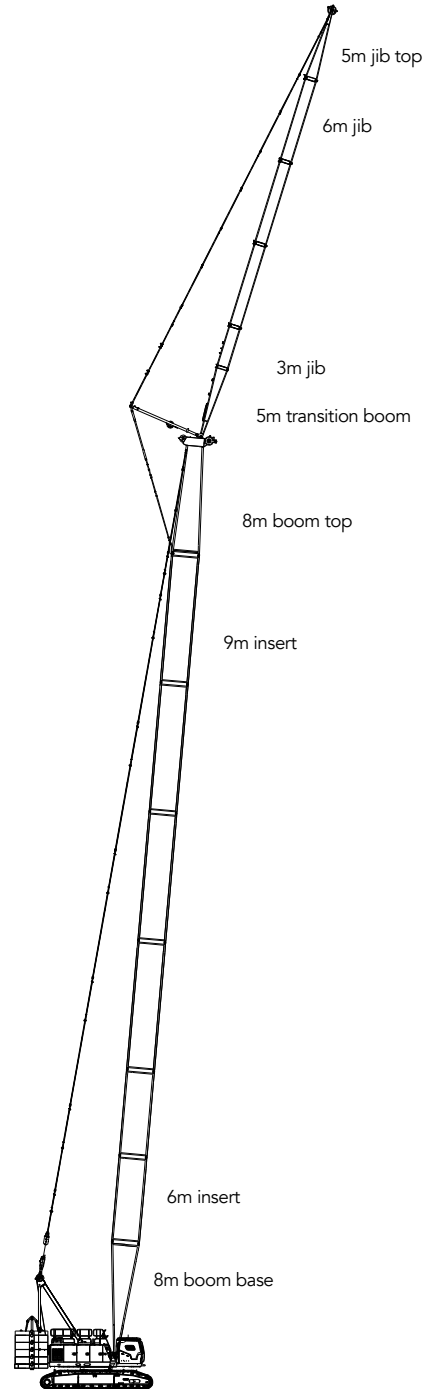
Main hook, boom 16-70m, Carbody counterweight 0t, No extension jib. Reduce one 7.1t block and one 3t block on each side if it is Regular counterweight; reduce two 5.25t blocks on each side if it is Self-Assembly counterweight;

Boom length/ radius (m)	16	19	22	25	28	31	34	37	40	43	46	49	52	55	58	61	64	67	70	Boom length/ radius (m)
5	100.0																			5
6	94.6	90.6	86.2	82.1																6
7	78.7	75.1	75.8	72.7	69.8	67.1														7
8	66.7	63.9	64.9	62.5	60.2	58.1	56.1													8
9	57.0	55.5	56.6	54.6	52.9	51.1	49.5	48.0	46.5											9
10	48.9	48.5	50.1	48.5	47.0	45.6	44.2	42.8	41.6	40.4	39.3									10
12	37.9	41.0	39.4	39.2	38.4	37.2	36.2	35.2	34.3	33.3	32.5	31.6	30.8	29.9	29.2	28.3	27.3			12
14	30.7	33.3	32.0	31.7	31.5	31.4	30.5	29.7	28.9	28.1	27.5	26.8	26.0	25.4	24.7	24.0	23.4	22.7	22.1	14
16		27.9	26.7	26.5	26.3	26.1	25.9	25.6	24.9	24.2	23.7	23.0	22.4	21.9	21.3	20.7	20.1	19.6	19.1	16
18		23.9	22.8	22.6	22.4	22.2	22.0	21.9	21.7	21.1	20.6	20.0	19.6	19.0	18.5	18.1	17.5	17.0	16.5	18
20			19.8	19.6	19.5	19.2	19.0	18.8	18.6	18.4	18.1	17.7	17.2	16.7	16.2	15.8	15.3	14.8	14.4	20
22				17.2	17.0	16.8	16.6	16.4	16.2	16.1	16.0	15.7	15.2	14.7	14.4	14.0	13.5	13.1	12.7	22
24					15.1	14.9	14.7	14.5	14.3	14.2	14.0	13.8	13.6	13.1	12.8	12.4	12.0	11.6	11.2	24
26						13.3	13.1	12.9	12.7	12.5	12.4	12.2	12.0	11.8	11.4	11.0	10.6	10.3	10.0	26
28						11.9	11.7	11.5	11.3	11.1	11.0	10.8	10.6	10.5	10.3	9.9	9.5	9.1	8.8	28
30							10.5	10.4	10.2	10.0	9.9	9.7	9.5	9.2	9.1	8.8	8.5	8.2	7.9	30
32								9.3	9.2	8.9	8.8	8.6	8.5	8.3	8.1	7.9	7.6	7.2	6.9	32
34									8.3	8.1	8.0	7.8	7.6	7.3	7.2	7.0	6.8	6.5	6.2	34
36									7.5	7.3	7.2	7.0	6.8	6.6	6.5	6.3	6.1	5.7	5.4	36
38										6.6	6.5	6.3	6.1	5.9	5.8	5.5	5.3	5.0	4.8	38
40											5.9	5.7	5.5	5.2	5.1	4.9	4.8	4.5	4.2	40
42												5.1	4.9	4.8	4.6	4.4	4.2	3.9	3.6	42
44													4.6	4.5	4.2	4.1	3.9	3.7	3.4	44
46														4.0	3.7	3.6	3.4	3.2	3.0	46
48															3.3	3.2	2.9	2.8	2.6	48
50																2.9	2.6	2.4	2.2	50
Counter weight(t)	41.1+0 (Regular Counterweight)/40.3+0 (Self-Assembly Counterweight)																			Counter weight(t)
Parts of line	8	7	7	7	6	6	5	4	4	4	3	3	3	3	3	3	3	2	2	Parts of line

FJ Configuration

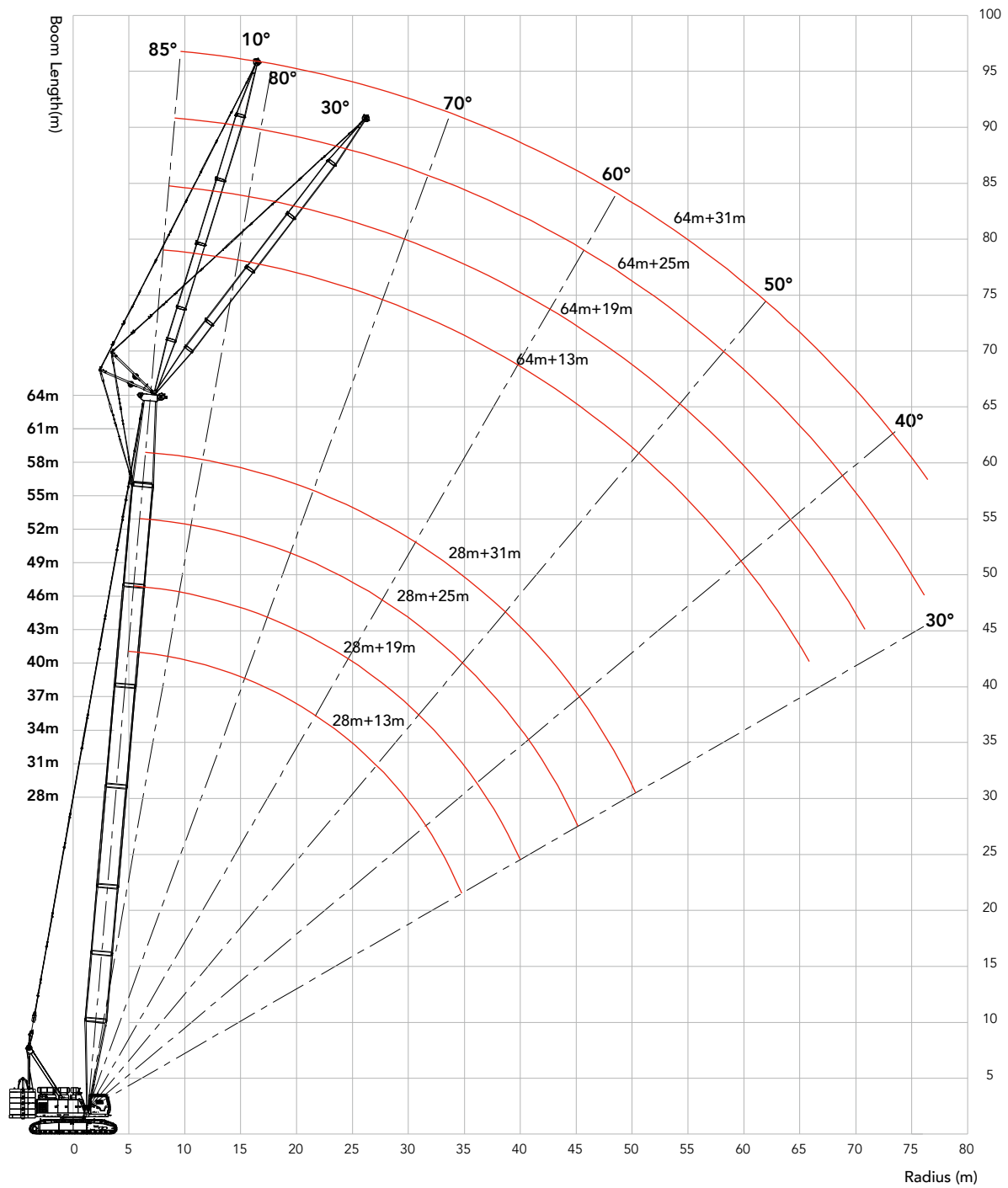


	5m	Jib base
	5m	Jib top
	6m	Jib insert
	3m	Jib insert



FJ Working Condition of fixed jib
(28 m~ 64 m)+(13 m~ 31 m)

FJ Working Radius



FJ Load Chart

Note:

- 1.The rated load in the load chart is calculated complying with EN 13000;
- 2.The working radius is the horizontal distance from the load center to the swing center;
- 3.The actual lifting capacity must subtract the weight of hooks and other riggings from the rated capacity in the load chart.
- 4.The load value is calculated when the object is hung freely,without considering the influence of wind on the load, ground conditions and slope, operation speed and the influence of any other negative factors over safe operation. Therefore, the operator bears the responsibility of making a judgement and decreasing the load and lowering speed.
5. All ratings are calculated when the machine is parking on firm and level ground with less than 1% gradient.

SCC1500A-1 crawler crane -FJa working condition load chart 1/8

Auxiliary hook, main boom 28~64m, jib 13m, boom to jib angle 10°														
Jib length Radius (m)	28	31	34	37	40	43	46	49	52	55	58	61	64	Jib length Radius (m)
9	30.0													9
10	28.8	27.8	27.3											10
12	27.4	27.1	26.8	26.6	26.3	26.0								12
14	26.3	26.4	26.5	26.5	26.1	25.8	25.5	25.2	24.6	24.2				14
16	25.5	25.6	25.8	26.0	25.8	25.5	25.2	24.9	24.1	23.5	23.0	22.6	21.8	16
18	24.7	24.5	24.9	25.1	24.9	24.8	24.4	24.1	23.4	22.9	22.4	22.0	21.1	18
20	23.5	23.3	23.5	23.7	23.5	23.3	23.1	22.9	22.3	22.0	21.6	21.2	20.3	20
22	22.3	22.0	21.9	21.8	21.8	21.6	21.5	21.2	21.0	20.7	20.3	20.2	19.5	22
24	20.7	20.1	20.1	19.9	19.8	19.7	19.6	19.5	19.4	19.3	19.0	18.8	18.4	24
26	18.9	18.3	18.3	18.2	18.0	17.9	17.8	17.7	17.6	17.5	17.3	17.2	17.0	26
28	17.4	17.3	17.1	16.9	16.7	16.5	16.3	16.1	16.0	15.8	15.6	15.4	15.3	28
30	15.9	15.8	15.6	15.4	15.2	15.0	14.8	14.7	14.5	14.3	14.1	14.0	13.8	30
32	14.7	14.5	14.3	14.2	13.9	13.7	13.6	13.4	13.2	13.0	12.8	12.7	12.6	32
34	13.5	13.4	13.2	13.0	12.8	12.6	12.4	12.2	12.1	11.9	11.7	11.5	11.4	34
36	12.5	12.4	12.2	12.0	11.8	11.6	11.5	11.3	11.1	10.9	10.7	10.6	10.4	36
38	11.7	11.5	11.3	11.2	10.9	10.7	10.6	10.4	10.2	10.0	9.8	9.7	9.6	38
40		10.7	10.5	10.4	10.2	10.0	9.8	9.6	9.4	9.3	9.1	8.9	8.8	40
42			9.8	9.7	9.4	9.3	9.1	8.9	8.7	8.5	8.4	8.2	8.1	42
44				9.0	8.8	8.6	8.4	8.2	8.1	7.9	7.7	7.5	7.4	44
46				8.4	8.2	8.0	7.9	7.7	7.5	7.3	7.1	6.9	6.8	46
48					7.7	7.5	7.3	7.1	7.0	6.8	6.6	6.4	6.2	48
50						7.0	6.8	6.6	6.5	6.3	6.0	5.8	5.7	50
52							6.4	6.2	6.0	5.8	5.6	5.4	5.2	52
54								5.7	5.5	5.3	5.1	4.9	4.8	54
56								5.3	5.1	4.9	4.7	4.5	4.4	56
58									4.7	4.5	4.3	4.1	4.0	58
60										4.2	4.0	3.8	3.6	60
62											3.6	3.4	3.3	62
64											3.3	3.1	3.0	64
66												2.8	2.7	66
68													2.4	68
Counter weight(t)	61.3+20													Counter weight(t)
Parts of line	3	3	3	2	2	2	2	2	2	2	2	2	2	Parts of line

Unit: t

FJ Load Chart

SCC1500A-1 crawler crane -FJa working condition load chart 2/8

SCC1500A-1 crawler crane -FJa working condition load chart 2/8														
Auxiliary hook, main boom 28~64m, jib 19m, boom to jib angle 10°														
Jib length (m) Radius (m)	28	31	34	37	40	43	46	49	52	55	58	61	64	Jib length (m) Radius (m)
14	22.2	22.3	22.1											14
16	21.6	21.6	21.6	21.5	21.5	21.3								16
18	21.0	21.1	21.2	21.1	21.1	20.9	20.8	20.7	20.6	20.4				18
20	20.2	20.3	20.4	20.4	20.3	20.4	20.3	20.1	20.0	19.8	19.6	18.9	17.8	20
22	19.4	19.5	19.6	19.6	19.5	19.6	19.5	19.3	19.1	18.9	18.7	18.0	17.2	22
24	18.5	18.6	18.6	18.5	18.4	18.4	18.2	18.0	17.8	17.7	17.5	17.1	16.5	24
26	17.4	17.3	17.2	17.1	17.1	17.0	16.8	16.7	16.6	16.4	16.2	16.1	15.8	26
28	16.5	16.4	16.2	16.1	16.0	15.9	15.7	15.5	15.3	15.2	15.0	14.8	14.7	28
30	15.3	15.2	15.0	14.9	14.8	14.8	14.6	14.4	14.3	14.1	13.9	13.7	13.6	30
32	14.2	14.0	13.8	13.7	13.6	13.5	13.3	13.1	13.0	12.8	12.6	12.5	12.3	32
34	13.0	12.9	12.7	12.6	12.5	12.5	12.3	12.1	11.9	11.8	11.6	11.4	11.3	34
36	12.2	12.1	11.9	11.8	11.7	11.6	11.4	11.2	11.1	10.9	10.7	10.5	10.4	36
38	11.3	11.1	10.9	10.8	10.7	10.6	10.4	10.2	10.1	9.9	9.7	9.6	9.4	38
40	10.6	10.4	10.2	10.1	10.0	9.9	9.7	9.5	9.4	9.2	9.0	8.9	8.7	40
42	9.8	9.6	9.4	9.3	9.2	9.1	8.9	8.7	8.6	8.4	8.2	8.1	7.9	42
44		9.0	8.8	8.7	8.6	8.5	8.4	8.1	7.9	7.8	7.6	7.4	7.2	44
46		8.5	8.3	8.2	8.1	8.0	7.8	7.6	7.4	7.3	7.1	6.9	6.7	46
48			7.7	7.6	7.5	7.5	7.4	7.2	7.0	6.8	6.6	6.3	6.1	48
50				7.2	7.1	7.0	6.9	6.6	6.4	6.2	6.0	5.8	5.7	50
52					6.5	6.3	6.2	6.0	5.9	5.7	5.5	5.3	5.1	52
54					6.1	5.9	5.7	5.5	5.3	5.2	5.0	4.8	4.6	54
56						5.5	5.3	5.1	4.9	4.8	4.6	4.4	4.2	56
58							5.0	4.8	4.6	4.4	4.2	4.0	3.8	58
60								4.4	4.3	4.1	3.9	3.8	3.5	60
62								4.0	3.9	3.8	3.6	3.4	3.1	62
64									3.6	3.4	3.2	3.0	2.8	64
66										3.1	2.9	2.7	2.5	66
68											2.6	2.4	2.2	68
70												2.2	2.0	70
72												2.0		72
Counter weight(t)	61.3+20													Counter weight(t)
Parts of line	2	2	2	2	2	2	2	2	2	2	2	2	2	2

FJ Load Chart

SCC1500A-1 crawler crane -FJa working condition load chart 3/8

Auxiliary hook, main boom 28~64m, jib 25m, boom to jib angle 10°														
Jib length Radius (m)	28	31	34	37	40	43	46	49	52	55	58	61	64	Jib length Radius (m)
16	14.3	14.3	14.2											16
18	14.0	14.0	14.0	14.0	13.9	13.9								18
20	13.7	13.7	13.7	13.7	13.7	13.6	13.5	13.4	13.3	13.1				20
22	13.4	13.4	13.4	13.4	13.4	13.3	13.3	13.2	13.1	13.0	12.8	12.6	12.4	22
24	13.0	13.0	13.1	13.1	13.1	13.1	13.1	13.0	12.9	12.8	12.7	12.5	12.2	24
26	12.6	12.7	12.7	12.8	12.8	12.8	12.8	12.7	12.7	12.6	12.5	12.3	12.1	26
28	12.2	12.3	12.2	12.4	12.5	12.5	12.5	12.4	12.4	12.3	12.2	12.1	11.9	28
30	11.8	11.9	11.9	12.0	12.1	12.1	12.1	12.1	12.1	12.0	12.0	11.8	11.6	30
32	11.4	11.5	11.5	11.6	11.7	11.7	11.7	11.7	11.7	11.7	11.6	11.5	11.3	32
34	10.8	11.1	11.1	11.2	11.3	11.3	11.3	11.3	11.3	11.2	11.1	11.0	10.8	34
36	10.2	10.7	10.8	10.9	10.8	10.8	10.8	10.7	10.7	10.6	10.4	10.2	10.1	36
38	9.8	10.2	10.4	10.4	10.3	10.2	10.2	10.0	9.9	9.8	9.6	9.4	9.3	38
40	9.3	9.7	9.9	9.8	9.6	9.5	9.4	9.2	9.1	9.0	8.8	8.6	8.5	40
42	8.9	9.3	9.2	9.1	9.0	8.8	8.7	8.5	8.3	8.3	8.1	7.9	7.8	42
44	8.6	8.8	8.6	8.5	8.4	8.2	8.0	7.8	7.7	7.6	7.4	7.3	7.1	44
46	8.2	8.3	8.1	7.9	7.8	7.6	7.5	7.3	7.2	7.0	6.8	6.7	6.5	46
48	7.9	7.8	7.7	7.5	7.3	7.2	7.0	6.8	6.7	6.5	6.3	6.2	6.0	48
50		7.3	7.2	7.0	6.9	6.8	6.6	6.4	6.3	6.1	5.9	5.7	5.5	50
52		6.9	6.8	6.7	6.6	6.4	6.2	6.1	5.9	5.7	5.5	5.3	5.1	52
54			6.4	6.3	6.2	6.0	5.8	5.6	5.6	5.4	5.1	4.9	4.7	54
56				5.9	5.9	5.7	5.5	5.3	5.2	5.0	4.7	4.5	4.3	56
58					5.5	5.3	5.1	4.9	4.8	4.6	4.3	4.1	3.9	58
60						5.0	4.8	4.6	4.4	4.2	4.0	3.8	3.6	60
62							4.7	4.5	4.3	4.1	3.9	3.7	3.5	62
64								4.2	4.0	3.8	3.6	3.4	3.2	64
66									3.7	3.5	3.3	3.1	2.9	66
68										3.2	3.0	2.8	2.6	68
70											2.9	2.7	2.5	70
72												2.5	2.3	72
74													2.0	74
Counter weight(t)	61.3+20													Counter weight(t)
Parts of line	2	2	2	2	2	2	1	1	1	1	1	1	1	Parts of line

Unit: t

FJ Load Chart

SCC1500A-1 crawler crane -FJa working condition load chart 4/8

Auxiliary hook, main boom 28~64m, jib 31m, boom to jib angle 10°														
Jib length (m) Radius (m)	28	31	34	37	40	43	46	49	52	55	58	61	64	Jib length (m) Radius (m)
18	9.1	9.1	9.1											18
20	8.9	8.9	8.9	8.9	8.9	8.8								20
22	8.6	8.6	8.6	8.6	8.7	8.6	8.5	8.5	8.5	8.4				22
24	8.4	8.4	8.4	8.3	8.5	8.4	8.4	8.4	8.3	8.2	8.2	8.1	8.1	24
26	8.1	8.1	8.1	8.1	8.2	8.2	8.2	8.2	8.1	8.0	8.0	8.0	7.9	26
28	7.9	7.9	7.9	7.9	7.9	8.0	8.0	8.0	7.9	7.8	7.8	7.8	7.7	28
30	7.6	7.7	7.7	7.7	7.7	7.8	7.8	7.8	7.7	7.7	7.6	7.6	7.5	30
32	7.4	7.5	7.5	7.5	7.5	7.6	7.6	7.6	7.5	7.5	7.5	7.5	7.4	32
34	7.2	7.3	7.3	7.3	7.3	7.4	7.4	7.5	7.4	7.4	7.4	7.4	7.3	34
36	7.0	7.0	7.1	7.1	7.1	7.2	7.2	7.3	7.3	7.3	7.3	7.3	7.2	36
38	6.7	6.8	6.9	6.9	6.9	7.0	7.0	7.1	7.2	7.1	7.1	7.1	7.1	38
40	6.5	6.6	6.6	6.7	6.8	6.8	6.8	6.9	7.0	7.0	7.0	7.0	7.0	40
42	6.3	6.4	6.4	6.5	6.6	6.6	6.6	6.7	6.8	6.8	6.8	6.8	6.8	42
44	6.1	6.2	6.2	6.3	6.4	6.4	6.4	6.5	6.6	6.6	6.6	6.6	6.6	44
46	5.9	6.0	6.0	6.1	6.2	6.2	6.2	6.3	6.4	6.4	6.4	6.4	6.4	46
48	5.7	5.8	5.9	5.9	6.0	6.0	6.0	6.1	6.2	6.2	6.2	6.2	6.1	48
50	5.5	5.6	5.7	5.7	5.8	5.8	5.8	5.9	6.0	6.0	6.0	5.9	5.6	50
52	5.3	5.4	5.5	5.5	5.6	5.6	5.6	5.7	5.7	5.6	5.5	5.3	5.0	52
54	5.1	5.2	5.4	5.4	5.4	5.4	5.4	5.4	5.4	5.2	5.0	4.8	4.6	54
56		5.0	5.2	5.3	5.2	5.2	5.2	5.1	5.0	4.8	4.6	4.4	4.2	56
58			5.1	5.2	5.0	5.0	4.9	4.7	4.7	4.5	4.3	4.1	3.9	58
60			5.0	5.1	4.8	4.8	4.6	4.4	4.3	4.2	3.9	3.8	3.6	60
62				5.0	4.6	4.6	4.3	4.1	4.0	3.8	3.6	3.4	3.2	62
64					4.4	4.3	4.0	3.8	3.7	3.5	3.3	3.1	2.9	64
66						4.0	3.7	3.5	3.4	3.2	3.0	2.8	2.6	66
68						3.7	3.4	3.2	3.1	2.9	2.7	2.5	2.3	68
70							3.1	2.9	2.8	2.7	2.4	2.3	2.1	70
72								2.7	2.5	2.4	2.2	2.0		72
74									2.2	2.1	2.0			74
76										2.0				76
Counter weight(t) Parts of line	61.3+20													Counter weight(t) Parts of line
	1	1	1	1	1	1	1	1	1	1	1	1	1	

FJ Load Chart**SCC1500A-1 crawler crane -FJa working condition load chart 5/8**

Auxiliary hook, main boom 28~64m, jib 13m, boom to jib angle 30°														
Jib length Radius (m)	28	31	34	37	40	43	46	49	52	55	58	61	64	Jib length Radius (m)
14	22.4	22.7	23.0											14
16	21.0	21.4	21.7	22.0	22.3	22.6								16
18	19.8	20.2	20.6	21.0	21.3	21.6	21.8	22.1	22.3	22.5				18
20	18.8	19.2	19.6	20.0	20.3	20.6	20.9	21.2	21.4	21.7	21.9	22.0	22.0	20
22	17.9	18.3	18.7	19.1	19.5	19.8	20.1	20.4	20.5	20.8	21.0	21.1	21.2	22
24	17.1	17.5	17.9	18.3	18.7	19.0	19.2	19.4	19.5	19.6	19.7	19.8	19.7	24
26	16.4	16.8	17.2	17.5	17.8	18.0	18.1	18.2	18.2	18.2	18.1	18.0	17.8	26
28	15.8	16.2	16.3	16.6	16.8	16.8	16.8	16.7	16.6	16.5	16.3	16.2	16.0	28
30	15.1	15.3	15.2	15.4	15.5	15.5	15.4	15.2	15.1	14.9	14.8	14.6	14.5	30
32	14.3	14.3	14.2	14.2	14.3	14.2	14.0	13.9	13.7	13.6	13.4	13.3	13.1	32
34	13.5	13.4	13.4	13.3	13.2	13.0	12.8	12.7	12.6	12.4	12.3	12.1	12.0	34
36	12.6	12.5	12.4	12.3	12.1	12.0	11.8	11.7	11.5	11.4	11.2	11.1	10.9	36
38	11.8	11.7	11.5	11.4	11.2	11.1	10.9	10.8	10.6	10.5	10.3	10.2	10.0	38
40		10.8	10.7	10.5	10.4	10.2	10.1	9.9	9.8	9.6	9.5	9.3	9.2	40
42			9.9	9.8	9.7	9.5	9.4	9.2	9.1	8.9	8.7	8.6	8.4	42
44			9.3	9.1	9.0	8.8	8.7	8.5	8.4	8.2	8.1	7.9	7.8	44
46				8.5	8.4	8.2	8.1	7.9	7.8	7.6	7.5	7.3	7.2	46
48					7.8	7.7	7.5	7.4	7.2	7.1	6.9	6.8	6.6	48
50						7.1	7.0	6.8	6.7	6.6	6.4	6.2	6.0	50
52							6.5	6.4	6.2	6.1	5.9	5.7	5.5	52
54								5.9	5.8	5.6	5.4	5.2	5.0	54
56								5.5	5.3	5.1	5.0	4.8	4.6	56
58									4.9	4.7	4.5	4.4	4.2	58
60										4.3	4.2	4.0	3.8	60
62											4.0	3.8	3.6	62
64												3.5	3.3	64
66													3.0	66
68														68
70														70
Counter weight(t)	61.3+20													Counter weight(t)
Parts of line	2	2	2	2	2	2	2	2	2	2	2	2	2	Parts of line

Unit: t

FJ Load Chart

SCC1500A-1 crawler crane –FJa working condition load chart 6/8

Auxiliary hook, main boom 28~64m, jib 19m, boom to jib angle 30°														
Jib length (m) Radius (m)	28	31	34	37	40	43	46	49	52	55	58	61	64	Jib length (m) Radius (m)
18	14.9	15.1	15.3											18
20	14.0	14.3	14.5	14.7	14.9	15.0								20
22	13.3	13.6	13.8	14.0	14.2	14.4	14.6	14.7	14.9	15.0				22
24	12.7	12.9	13.2	13.4	13.6	13.8	14.0	14.2	14.3	14.4	14.5	14.6	14.7	24
26	12.1	12.4	12.6	12.8	13.1	13.3	13.5	13.6	13.8	13.9	14.0	14.1	14.2	26
28	11.6	11.8	12.1	12.4	12.6	12.8	13.0	13.2	13.2	13.3	13.4	13.5	13.6	28
30	11.1	11.4	11.6	11.9	12.1	12.3	12.6	12.6	12.6	12.7	12.8	12.9	13.0	30
32	10.7	11.0	11.2	11.5	11.7	11.9	12.0	12.1	12.1	12.2	12.3	12.3	12.4	32
34	10.3	10.6	10.9	11.1	11.3	11.4	11.5	11.6	11.6	11.7	11.8	11.8	11.9	34
36	10.0	10.3	10.5	10.6	10.8	10.9	11.0	11.1	11.1	11.2	11.2	11.2	11.2	36
38	9.7	10.0	10.2	10.3	10.4	10.5	10.6	10.6	10.6	10.6	10.5	10.5	10.4	38
40	9.5	9.6	9.8	9.9	10.0	10.0	10.1	10.1	10.1	10.0	9.8	9.7	9.6	40
42	9.3	9.3	9.5	9.4	9.5	9.5	9.6	9.5	9.4	9.3	9.1	9.0	8.8	42
44	9.0	8.8	9.0	8.9	9.0	9.1	9.0	8.9	8.7	8.6	8.4	8.3	8.2	44
46		8.3	8.5	8.3	8.4	8.5	8.4	8.2	8.1	8.0	7.8	7.7	7.5	46
48			8.0	7.8	7.9	8.0	7.8	7.7	7.5	7.4	7.2	7.1	7.0	48
50			7.5	7.4	7.5	7.4	7.3	7.1	7.0	6.9	6.7	6.6	6.4	50
52				7.0	7.1	7.0	6.8	6.7	6.5	6.4	6.2	6.1	5.9	52
54					6.6	6.5	6.4	6.2	6.1	5.9	5.8	5.6	5.4	54
56						6.1	6.0	5.8	5.7	5.5	5.3	5.2	5.0	56
58							5.6	5.4	5.2	5.1	4.9	4.7	4.6	58
60							5.2	5.0	4.9	4.7	4.5	4.4	4.2	60
62								4.6	4.5	4.3	4.1	4.0	3.8	62
64									4.1	4.0	3.8	3.6	3.5	64
66										3.6	3.5	3.3	3.1	66
68										3.3	3.2	3.0	2.8	68
70											2.9	2.7	2.5	70
72												2.4	2.3	72
74													2.0	74
Counter weight(t)	61.3+20													Counter weight(t)
Parts of line	2	2	2	2	2	2	2	2	2	2	2	2	2	Parts of line

FJ Load Chart**SCC1500A-1 crawler crane -FJa working condition load chart 7/8**

Auxiliary hook, main boom 28~64m, jib 25m, boom to jib angle 30°														
Jib length Radius (m)	28	31	34	37	40	43	46	49	52	55	58	61	64	Jib length Radius (m)
22	10.9	11.1	11.2											22
24	10.3	10.5	10.7	10.8	10.9	11.0								24
26	9.8	10.0	10.2	10.3	10.5	10.6	10.7	10.8	10.9	11.0				26
28	9.4	9.6	9.7	9.9	10.0	10.2	10.3	10.4	10.5	10.6	10.7	10.8	10.9	28
30	9.0	9.1	9.3	9.5	9.6	9.8	9.9	10.1	10.2	10.3	10.4	10.5	10.6	30
32	8.6	8.8	9.0	9.1	9.3	9.4	9.6	9.7	9.8	10.0	10.1	10.2	10.3	32
34	8.3	8.4	8.6	8.8	9.0	9.1	9.3	9.4	9.5	9.7	9.8	9.9	10.0	34
36	7.9	8.1	8.3	8.5	8.7	8.8	9.0	9.1	9.2	9.4	9.5	9.6	9.7	36
38	7.7	7.9	8.1	8.2	8.4	8.6	8.7	8.8	9.0	9.1	9.2	9.3	9.4	38
40	7.4	7.6	7.8	8.0	8.1	8.3	8.5	8.6	8.7	8.8	8.9	9.0	9.1	40
42	7.2	7.4	7.6	7.8	7.9	8.1	8.2	8.3	8.4	8.5	8.6	8.6	8.7	42
44	7.0	7.2	7.4	7.5	7.7	7.9	8.0	8.0	8.1	8.2	8.2	8.2	8.3	44
46	6.9	7.0	7.2	7.4	7.5	7.7	7.8	7.7	7.8	7.9	7.8	7.8	7.8	46
48	6.7	6.9	7.0	7.2	7.3	7.5	7.5	7.4	7.5	7.4	7.3	7.3	7.2	48
50	6.6	6.7	6.9	7.0	7.1	7.2	7.2	7.1	7.1	7.0	6.8	6.8	6.7	50
52		6.6	6.8	6.8	6.9	6.9	6.8	6.7	6.6	6.6	6.4	6.3	6.2	52
54			6.7	6.6	6.7	6.5	6.4	6.3	6.1	6.2	6.0	5.9	5.7	54
56			6.5	6.3	6.4	6.1	6.1	6.0	5.7	5.8	5.6	5.5	5.3	56
58				6.0	6.0	5.8	5.8	5.7	5.3	5.4	5.2	5.1	4.9	58
60					5.6	5.4	5.4	5.3	4.9	5.0	4.8	4.7	4.5	60
62						5.0	5.1	4.9	4.6	4.6	4.4	4.3	4.1	62
64							4.7	4.6	4.3	4.3	4.1	3.9	3.8	64
66							4.4	4.2	4.0	3.9	3.8	3.6	3.5	66
68								3.9	3.7	3.6	3.4	3.3	3.1	68
70									3.4	3.3	3.2	3.0	2.8	70
72										3.0	2.9	2.7	2.6	72
74										2.8	2.6	2.4	2.3	74
76											2.3	2.2	2.0	76
Counter weight(t)	61.3+20													Counter weight(t)
Parts of line	1	1	1	1	1	1	1	1	1	1	1	1	1	Parts of line

Unit: t

FJ Load Chart

SCC1500A-1 crawler crane –FJa working condition load chart 8/8

Auxiliary hook, main boom 28~64m, jib 31m, boom to jib angle 30°														
Jib length (m) Radius (m)	28	31	34	37	40	43	46	49	52	55	58	61	64	Jib length (m) Radius (m)
26	6.8	6.9	7.0											26
28	6.6	6.6	6.7	6.8	6.8	6.9								28
30	6.3	6.4	6.4	6.5	6.6	6.7	6.7	6.8	6.8	6.9				30
32	6.1	6.2	6.2	6.3	6.4	6.5	6.5	6.6	6.6	6.7	6.7	6.8	6.8	32
34	5.9	6.0	6.0	6.1	6.2	6.3	6.3	6.4	6.5	6.5	6.6	6.6	6.7	34
36	5.7	5.8	5.8	5.9	6.0	6.1	6.1	6.2	6.3	6.3	6.4	6.4	6.5	36
38	5.5	5.6	5.6	5.7	5.8	5.9	5.9	6.0	6.1	6.1	6.2	6.3	6.3	38
40	5.3	5.4	5.4	5.5	5.6	5.7	5.7	5.8	5.9	5.9	6.0	6.1	6.1	40
42	5.1	5.2	5.2	5.3	5.4	5.5	5.5	5.6	5.7	5.7	5.8	5.9	5.9	42
44	5.0	5.0	5.0	5.1	5.2	5.3	5.3	5.4	5.5	5.5	5.6	5.7	5.7	44
46	4.9	4.9	4.9	4.9	5.0	5.1	5.1	5.2	5.3	5.3	5.4	5.5	5.5	46
48	4.8	4.8	4.8	4.8	4.8	4.9	4.9	5.0	5.1	5.1	5.2	5.3	5.3	48
50	4.7	4.7	4.7	4.7	4.7	4.8	4.7	4.8	4.9	4.9	5.0	5.1	5.1	50
52	4.6	4.6	4.6	4.6	4.6	4.7	4.6	4.7	4.8	4.8	4.9	5.0	5.0	52
54	4.5	4.5	4.5	4.5	4.5	4.6	4.5	4.6	4.7	4.7	4.8	4.8	4.8	54
56	4.4	4.4	4.4	4.4	4.4	4.5	4.4	4.5	4.6	4.6	4.6	4.6	4.5	56
58		4.3	4.3	4.3	4.3	4.3	4.3	4.4	4.5	4.5	4.4	4.3	4.2	58
60			4.2	4.2	4.2	4.2	4.2	4.3	4.4	4.3	4.2	4.1	4.0	60
62			4.1	4.1	4.1	4.1	4.1	4.2	4.2	4.1	4.0	3.9	3.8	62
64				4.0	4.0	3.9	3.9	4.1	4.0	3.9	3.8	3.7	3.6	64
66					3.9	3.8	3.7	3.9	3.8	3.7	3.6	3.5	3.4	66
68						3.7	3.6	3.7	3.6	3.5	3.4	3.3	3.2	68
70							3.5	3.5	3.4	3.3	3.2	3.1	3.0	70
72								3.3	3.3	3.2	3.1	3.0	2.9	72
74									3.1	3.0	2.9	2.8	2.7	74
76										2.8	2.7	2.6	2.4	76
78											2.5	2.3	2.2	78
80												2.2	2.1	80
Counter weight(t)	61.3+20													Counter weight(t)
Parts of line	1	1	1	1	1	1	1	1	1	1	1	1	1	Parts of line



Zhejiang SANY Equipment Co., Ltd.

SANY Industrial Park, No. 2087 Daishan Road, Wuxing District, Huzhou City,
Zhejiang Province, P. R. of China Zip 313028

After-sales Service 400 887 8318

Consulting 400 887 9318

— Agent information —

Due to updated technology, the technical parameters and configurations are subject to change without prior notice. The machine in the picture may include additional equipment. This album is for reference only, subject to the object.

All rights reserved for Sany, without the written permission of Sany, the contents of any part of this content shall not be copied or copied for any purpose.

© Printed in May 2019 in China

www.sany.com.cn



Please scan the official
WeChat account of Sany
for more information.